

# THE ABC'S OF VEO-IBD



Dr. Kelsen, Dr. Conrad, Dr. Patel, Megan Canavan, CRNP, & VEO-IBD Team

# VERY EARLY ONSET INFLAMMATORY BOWEL DISEASE

- IBD that occurs in infants or children less than 5 years of age
- Chronic disease
- Inflammation in the gastrointestinal (GI) tract
- Symptoms vary among patients

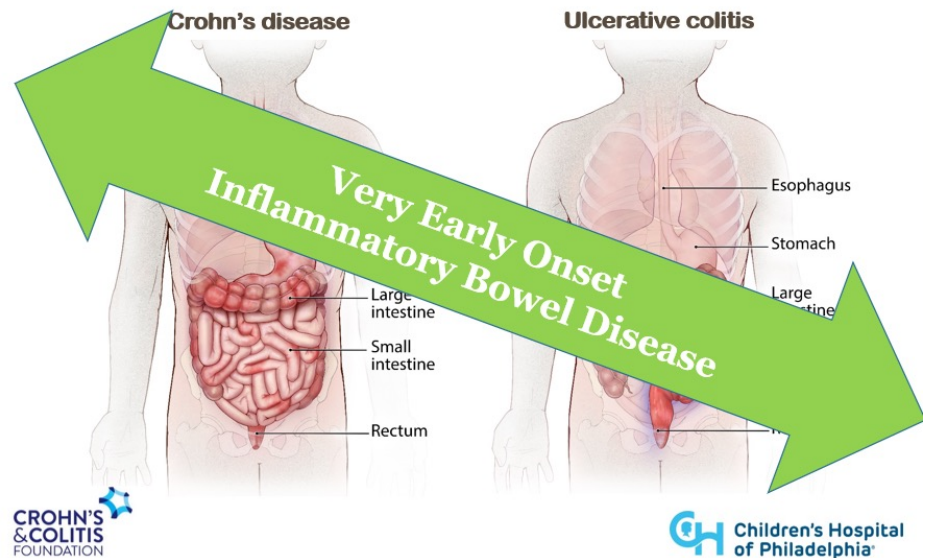
# A UNIQUE DISEASE



**Children with VEO-IBD often present differently than older children with IBD**

# VEO-IBD: A DIFFERENT DISEASE

- Distinct from IBD in older children
- Wide range of severity and response to treatment
- However, disease does not limit a child's quality of life and opportunities



# VEO-IBD: A DIFFERENT DISEASE

- There is a wide spectrum of symptoms
  - Every child's disease is different
- Many patients have GI symptoms
  - Diarrhea, abdominal pain, rectal bleeding, constipation
  - Severe diaper rash, perianal involvement
  - Intolerance to certain foods
- Some may have fevers, arthritis, rashes, mouth sores, issues with growth

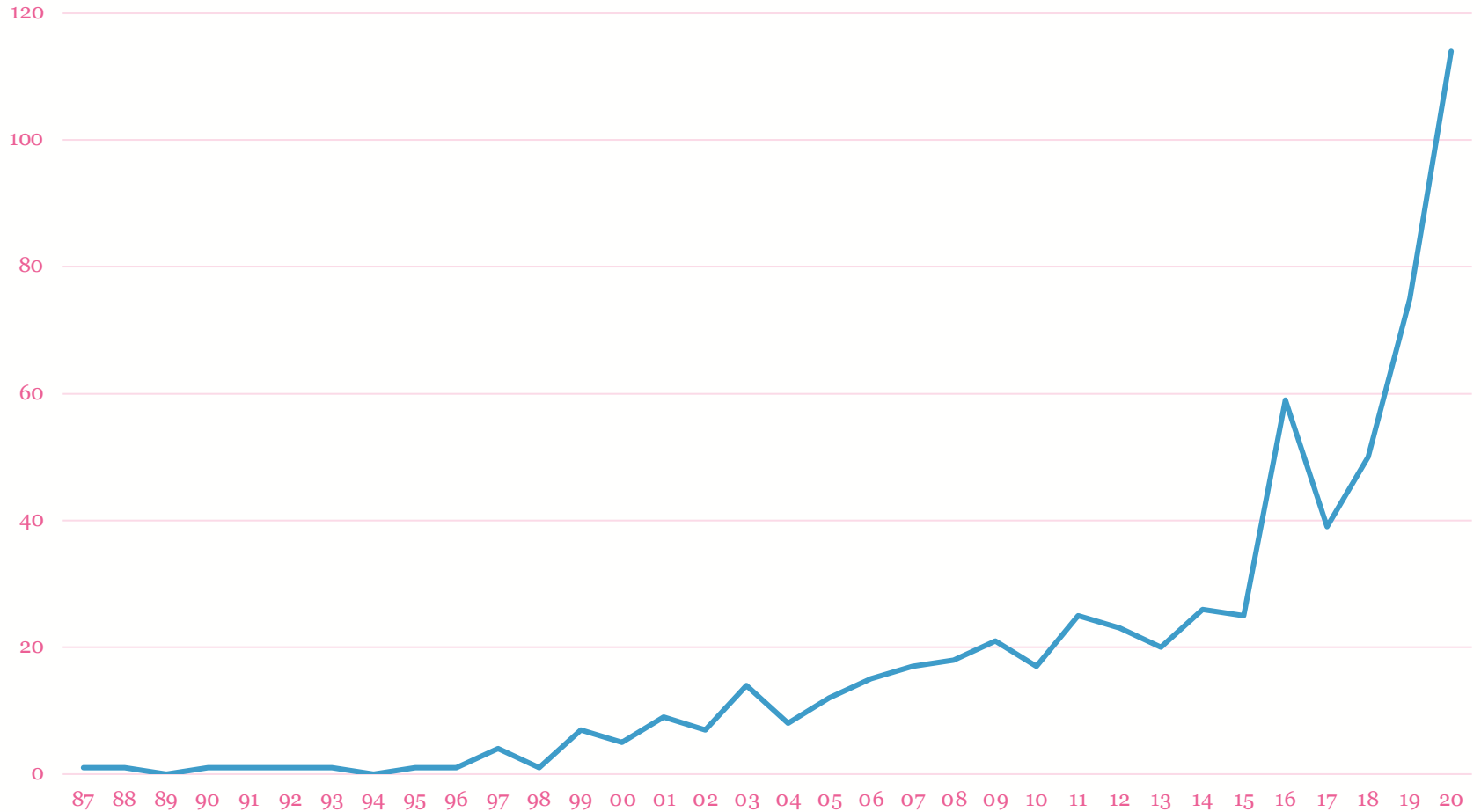
# EACH CHILD HAS A UNIQUE DISEASE COURSE

- No two children are the same
- There is not a one size fits all approach
- Each patient has a personalized treatment plan specific to their disease



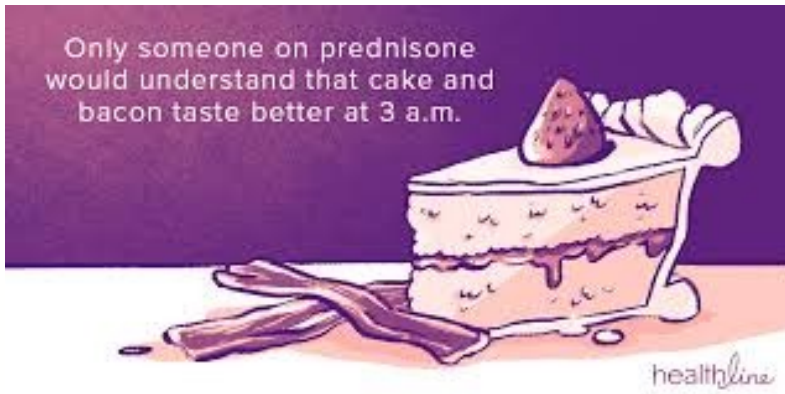
# RAPID RISE IN INCIDENCE

VEO Patients at CHOP by Year of Diagnosis



# PAST APPROACH: BAND-AID

- Steroids
- Surgery





# MANY TREATMENT OPTIONS

- Diet Therapies
- Medications that are similar to what are used in older pediatric IBD
- Targeted therapies based on genetic and immune findings
- Some children require more than one therapy at the same time

# SPECIAL CONSIDERATIONS IN VEO-IBD

- Assessing child development/meeting milestones
- Nutritional considerations and growth evaluations
- Timing of immunization schedule, including COVID vaccine
- Child life support for procedures
- Behavioral therapy for child and family with chronic medical issues

**WITH  
TREATMENT,  
THERE ARE NO  
LIMITS TO  
WHAT  
CHILDREN  
WITH VEO-IBD  
CAN DO OR  
BECOME!**



# CHOP VEO-IBD CLINIC

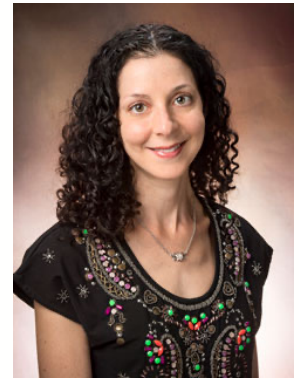
- Multidisciplinary team evaluates any child with symptoms at a very young age or has had very refractory disease course
- Multiple providers evaluate during the same visit at CHOP



# RESOURCES AND SUPPORT

- Virtual Support group for parents of children with VEO-IBD facilitated by our dedicated psychosocial team
- Peer Parenting Program
  - Meet another parent of a child with VEO-IBD who has lived this experience
  - Volunteer to be a parent mentor to a family with a newly diagnosed child with VEO-IBD
- IBD Psychologist
- Social Work
- CHOP VEO-IBD Website
- Email [ibdcenter@chop.edu](mailto:ibdcenter@chop.edu) for more info

# THANK YOU! CHOP VEO-IBD TEAM



**QUESTIONS?  
PLEASE TYPE  
QUESTIONS  
INTO THE CHAT BOX**

**CONTACT:  
IBDCENTER@CHOP.EDU**

