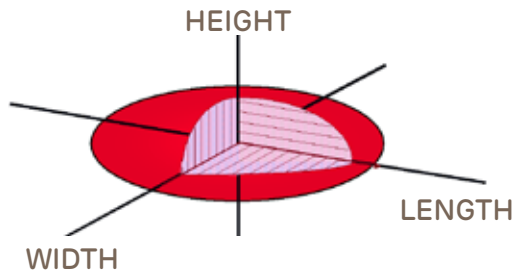


PRENATAL DIAGNOSIS AND MANAGEMENT OF CONGENITAL PULMONARY AIRWAY MALFORMATION (CPAM)



CPAM volume/head circumference ratio (CVR)

*Ellipsoid Volume =
height x width x length x 0.523*

$$\text{CVR} = \frac{\text{AP} \times \text{TRV} \times \text{length} \times 0.523}{\text{Head circumference}}$$

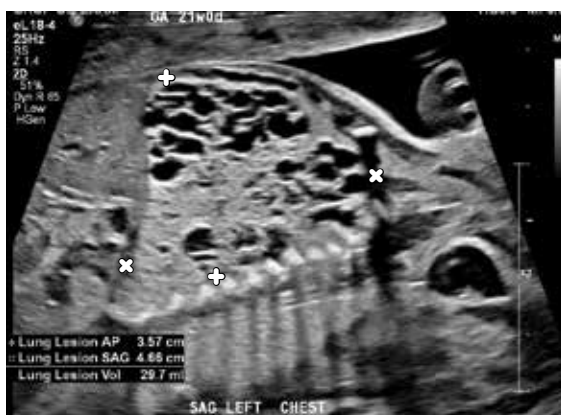
*Head circumference
(all measurements taken in centimeters)*

> 1.6 at risk for hydrops and warrants evaluation two to three times a week

1.2 – 1.6 evaluation initially twice weekly, then weekly depending on growth and mass effect

< 1.2 evaluation at two week intervals depending on gestational age and growth

continued >



Sonographic Surveillance

MANAGEMENT OF PRENATALLY DIAGNOSED CPAM

