

CARDIAC CENTER PROVIDER REFERENCE GUIDE

How to Refer a Patient

At Children's Hospital of Philadelphia (CHOP), the Cardiac Center Nurse Navigators are exclusively dedicated to helping all referring physicians connect with the Cardiac Center. Nurse Navigators assist with transfers of care, second opinions, procedures, specialty programs and advanced imaging.

Cardiac Center Nurse Navigators

Phone: 267-426-9600

Fax: 267-426-5139

Email: CHOPCardiacReferral@chop.edu

Website: www.chop.edu/cardiac-nurse-navigators

Please have the following information available:

- Patient demographics
- Insurance information
- Parent contact information
- Clinical reports and imaging
- Referring physician contact information

Adult Congenital Heart Disease Program

To refer an adult congenital heart patient, contact the Philadelphia Adult Congenital Heart Center.

Phone: 215-615-3388

Fax: 215-349-5927

Email: ACHDAdminAssistants@pennmedicine.upenn.edu

Fetal Heart Program

To make a referral to the Fetal Heart Program, call 215-590-5647 or fax 267-303-5269.

International Patient Referrals

To refer an international patient, call 001-267-426-6298 to speak to a Global Care Coordinator, or make a referral online at <https://gps.chop.edu/refer-a-patient>. Learn more about CHOP's Global Patient Services at <https://gps.chop.edu>.

How to Admit a Patient

If a patient requires direct admission, contact the on-call cardiology physician at 215-590-1000 and ask to speak to the cardiology fellow on call (pager #10154).

A cardiology triage nurse can be reached at 215-590-4296.

If emergency transport is required, contact the Transport Intake Center at 215-590-2160.

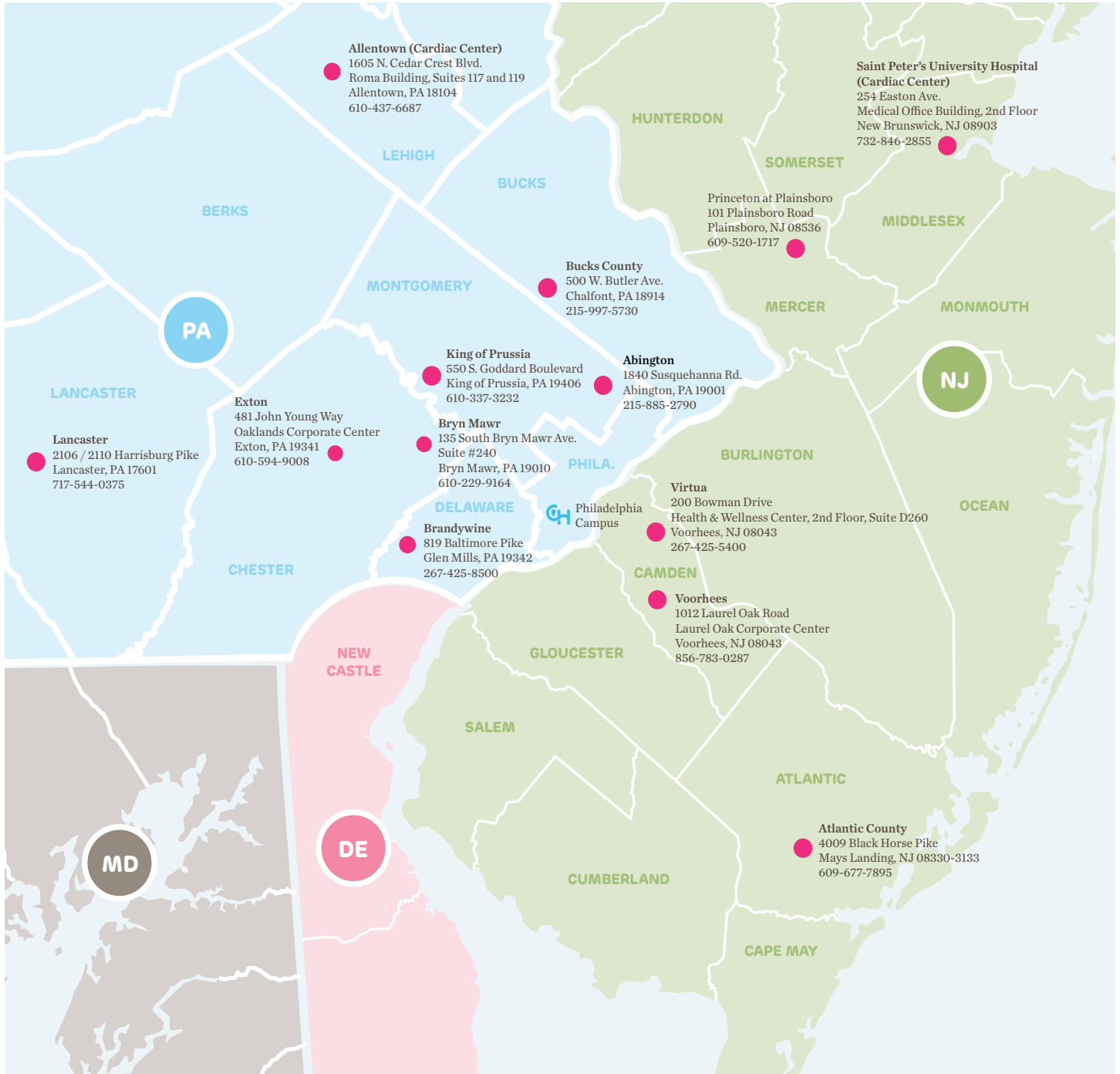


Satellite Clinic Locations

The Cardiac Center provides outpatient cardiology care throughout Pennsylvania and New Jersey. To have your patient seen by CHOP Cardiology, call 267-426-9600 or email chopcardiacreferral@chop.edu.



Scan this QR code for more information about the services offered at each location.



©2023 The Children's Hospital of Philadelphia. 28C:MD2346ZCZ/NP/05-23

Stay Connected with Us!
 Keep up with the latest Cardiac Center news by joining our mailing list at www.chop.edu/cardiology-prof-news/subscribe.

