

## **Reshaping Our Economic Opportunity Plan**

Equitable opportunity is a critical function of our society that no longer sits on the sideline waiting to be injected into conversation. It is the economic fuel that has pushed our society and economy forward and allowed for significant positive changes to excel growth. Equitable opportunity is not a choice at the Children's Hospital of Philadelphia, and when it comes to expanding our campus to positively impact more incredible young lives and their families, we spare no chance to work with top Minority, Women Owned Business Enterprises (MWBE's).

“We are opening and continue to open groundbreaking and transformational spaces that will help lead CHOP into the future of pediatric care and research. As we expand, we are excited at the opportunity to work with more diverse contractors and bring more minority-owned developers to the table to lead this work.”

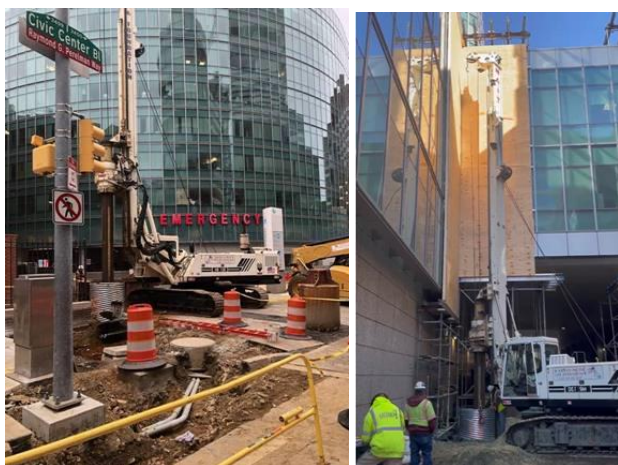
*-Donald Moore, SVP of Real Estate, Facilities & Operations*

We've always believed in an equitable process for working with our partners to expand our reach, but we are putting a stake in the ground to completely transform the Economic Opportunity Plan (EOP) process. Traditionally, the MWBE community have had limited access and knowledge of opportunities

to work with large institutions like CHOP. This exclusionary practice has stifled MWBE's in many ways and halted their ability to grow contrary to their non-minority owned enterprise counterparts. With our new approach, we aim to attract more MWBE's to partner on meaningful work to advance our mission.

## What We're Doing

While we're taking several steps to reach more MWBE's in future large and smaller scale construction projects at CHOP, and we've already made incredible strides in our approach to reach more diverse firms. We are currently engaged in partnership with [American Pile](#), a minority owned and operated pile driving and drilling specialty contractor on our largest construction project at our Philadelphia Campus, the New Patient Tower. This partnership was established in August 2021, when work began to construct our temporary bridge to connect the Buerger Center for Pediatric Research with Main Hospital. This incredibly important work will ensure a much less confusing and easy-to-navigate commute for patients, families and visitors when visiting our Philadelphia Campus.



CHOP encourages all small, local, diverse and disadvantaged businesses to participate in sourcing event opportunities for large purchase orders and/or term contracts available at CHOP.

## **Setting A New Standard**

We deeply understand that diverse partnerships empower unique perspectives and expands equity across our region. Our partnership with American Pile is just a snapshot into the transformation of our approach to partnership. As part of the New Patient Tower Project, we will continue to host outreach events specifically geared towards the MWBE community with our LFDPR team. This dedicated time with MWBE firms is critical to the EOP process as it will help to build relationships, which ultimately leads to more diversity in relation to CHOP bids.

As we move forward, partnering with more MWBE firms will be at the center of our approach and our EOP process. We are taking the necessary steps to position ourselves to partner with more of these incredibly talented and qualified firms, who will ultimately help lead us into a bigger and brighter future ahead as we advance our mission.