

# CHOP INPATIENT REHABILITATION

## FISCAL YEAR 2024 ANNUAL REPORT

### A NOTE FROM LEADERSHIP

The Inpatient Rehabilitation Unit at the Children’s Hospital of Philadelphia (CHOP) has had an incredible year. The Rehab Unit achieved accreditation from the Commission on Accreditation of Rehabilitation Facilities (CARF) in December 2023. The journey to CARF accreditation required a thorough review of our policies and procedures, with updates as needed. We have made many changes to our communication and safety practices that we hope have a significant positive impact on the lives of our persons served. Achieving this three-year accreditation reflects our commitment to continuously improve services, manage risk, and distinguish our service delivery for the CHOP community, the public, funders, and regulators. Our journey did not stop with the accreditation, as our team is focused on continuous quality improvement.

Our commitment to our patients and families is felt by everyone that comes to our unit. In fiscal year 2024 (July 2023 – June 2024), our patients and caregivers reported a 100% likelihood to recommend CHOP’s Inpatient Rehab Unit. Our referring providers also have a 96% likelihood to recommend. Finally, the Rehabilitation Unit was also recognized by the Hospital for

our exceptional teamwork by continuing to demonstrate our commitment to our patients, their caregivers, and our staff.

The focus of this fiscal year has been to improve ready access to and understanding of our data and outcomes. To better visualize our data, we created multiple dashboards to improve accessibility for all staff members. This data accessibility allows for a deeper dive into our performance and processes and will be used to guide improvement projects on the unit. Much of this data will also be shared with our broader group of stakeholders, including the data found in this annual report.

We hope you enjoy reading our year in review and look forward to continuing to work with all stakeholders to provide the best care, environment, and outcomes for our patients and their caregivers.

Sincerely,

Sarah (Sally) Evans, MD  
J. Michael King, MD  
Jamila Aberdeen, PT, DPT, MBA  
Maureen Sullivan, MSW, MBA  
Carol Knightly, AuD  
Michele Farley, MSN, RNC-NIC  
Matthew Tiede, MS, PA-C

## CHOP INPATIENT REHABILITATION FISCAL YEAR 2024 ANNUAL REPORT

Inpatient Pediatric Rehabilitation at Children’s Hospital of Philadelphia is an 18-bed unit located within Children’s Hospital of Philadelphia (CHOP) in Philadelphia, Pennsylvania. We are dedicated to helping patients and their caregivers through the recovery process with a comprehensive, individualized, and patient-centered rehabilitation program.

### OUR MISSION

Children’s Hospital of Philadelphia is committed to setting the standard of care for comprehensive pediatric rehabilitation services across the continuum of care such that each patient realizes their maximal recovery, function and self-sufficiency.

### OUR VISION

The Department of Rehabilitation at the Children’s Hospital of Philadelphia is a world-renowned leader in rehabilitation that is dedicated to empowering patients and their families to achieve their optimal quality of life, through translational research and use of innovative technology.

**OUR GOAL IS THAT EVERY  
PATIENT ACHIEVES THEIR  
GREATEST POTENTIAL.**



CONDITIONS + SERVICES

### CONDITIONS WE TREAT

We offer individualized, patient-centered care for pediatric patients in need of intensive rehabilitation. We specialize in several conditions and offer our patients specialty services and support including:

- Traumatic and non-traumatic brain injury
- Traumatic and non-traumatic spinal cord injuries
- Neurologic disorders
- Congenital disorders
- Orthopedic conditions
- Trauma
- Cardiac/pulmonary conditions
- Debility related to significant medical illness

### REHABILITATION SERVICES OFFERED

- Medical Care
- Social Work
- Nursing
- Case Management
- Physical Therapy
- Audiology
- Occupational Therapy
- Respiratory Therapy
- Speech Therapy
- Radiology
- Child Life
- Psychology
- Creative Arts Therapy
- Neuropsychology
- Education

### SUPPORT SERVICES AVAILABLE

- Medical
- Respiratory
- Diagnostic Radiology
- Laboratory
- Spiritual Care
- Nutritional Therapy and Dietary
- Pharmacy
- Community re-entry

WHY CHOOSE US

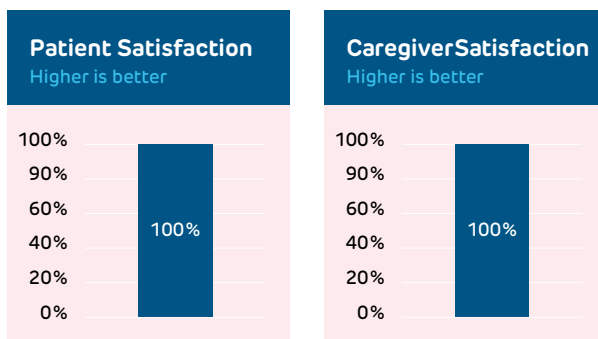
### Team-based Approach

Our goal for each patient is to realize maximal recovery, self-sufficiency, and function, most often by returning home. We accomplish this through a team-based approach to rehab. Our multidisciplinary team includes physicians, nurses, therapists, professional and support staff that work together to fully evaluate each patients’ individual abilities in relation to functional mobility, self-care skills, cognitive abilities as well as any barriers to safety. The team will work with patients and caregivers to create an individualized treatment plan, as well as rehabilitation goals for discharge, which will be monitored and updated throughout the rehab stay.

### Our Strength in Numbers

Our team strives to achieve the best possible outcomes for each patient. We continuously monitor our performance and adjust as needed to continuously improve to benefit the patient and family.

### Patient and Caregiver Satisfaction



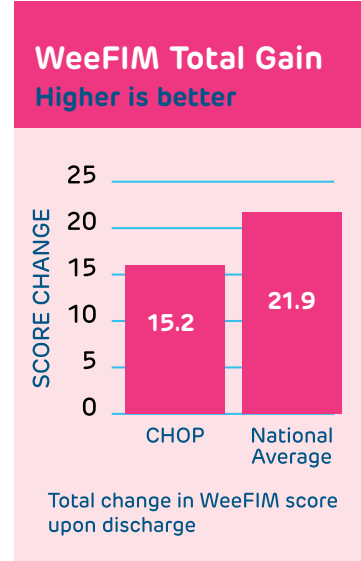
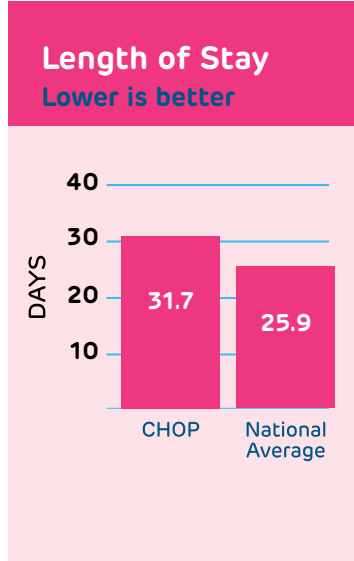
Last year we began collecting feedback from multiple sources including our patients, their caregivers, and our referral sources. This year we have been able to use the full year’s feedback to understand our performance and a large majority of feedback has been overwhelmingly positive. Our patients and their caregivers had a 100% likelihood

of recommending the CHOP Inpatient Rehab Unit to others. Our referral sources were also highly satisfied with our performance, with a 96% likelihood of recommending us. We continue to obtain feedback from all those involved in the rehab process to ensure continued satisfaction and drive improvement.

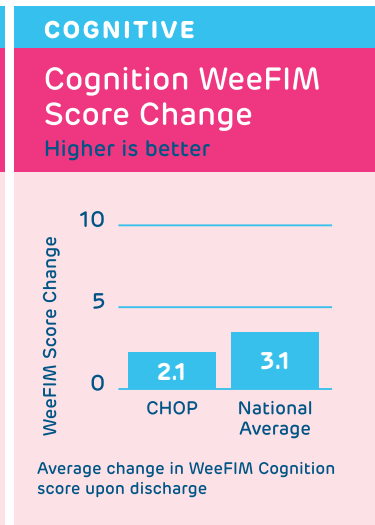
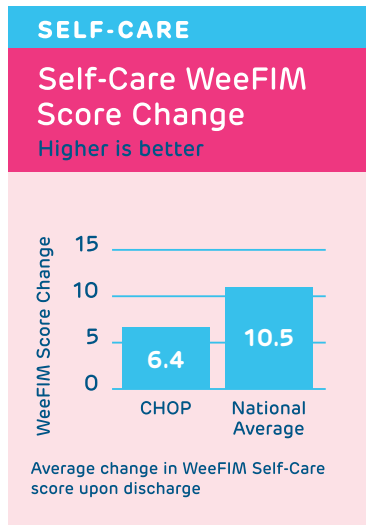
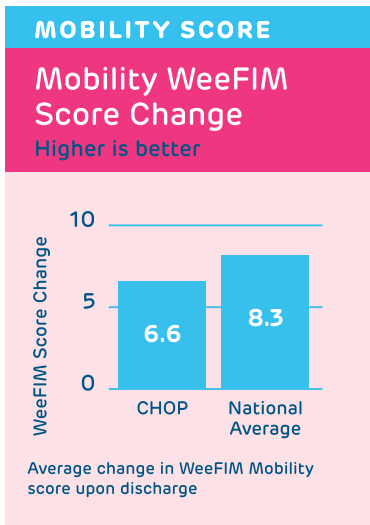
OUR OUTCOMES

**Length of Stay**

Our aim is to have patients home as quickly as possible after their rehab stay. To prepare for this goal, we begin discharge planning with patients and caregivers at the time of admission. We will continue to work to improve (i.e., decrease) our length of stay.



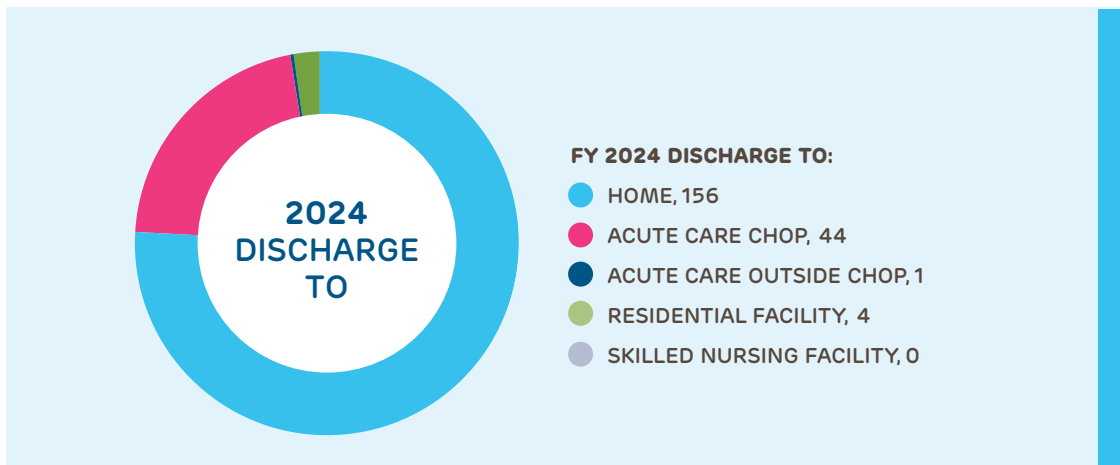
The **WeeFIM II**® is an outcomes tool for pediatric rehabilitation programs. We use the WeeFIM II to assess functional status at admission and to track progress of each of our patients throughout their rehab stay. After working last year to ensure the accuracy of our scoring, we will transition our focus this year to improving WeeFIM score changes from the time of admission to discharge.



POST DISCHARGE

### Outcomes After Discharge

The rehab team continues to care for and about patients even after discharge from the unit. We follow up with our patients' caregivers 3-4 months after discharge to ensure their needs continue to be met. The caregiver is asked about the patients' functional abilities with dressing, communication, mobility, eating, playing and overall health status. Outcomes for this year were resoundingly positive for each of these functional tasks, with 95-99% of patients functioning either the same or better since being discharged from the unit in each of these areas.



BY THE NUMBERS

2024 OVERALL PERFORMANCE

- 100% Patients who would recommend CHOP rehab to a friend or family member who needed therapy
- 3.4 Average hours of therapy received per day by each patient
- 76% Patients discharged directly home
- 86% Patients had an planned discharge to home or the hospital for further medical care

CHOP Rehab Program Information

DEMOGRAPHICS

Total patients: 205 | Male: 113 | Female: 92

DIAGNOSIS

The top diagnoses seen in CHOP Rehab for fiscal year 2024 include:

- Brain Dysfunction
- Neurologic Disorder
- Debility/Deconditioning
- Stroke
- Orthopedic Conditions

